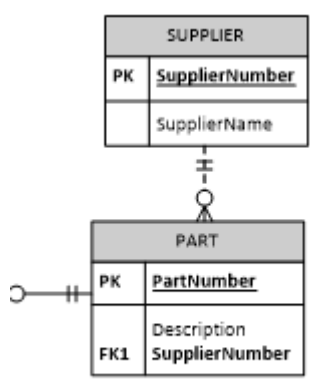
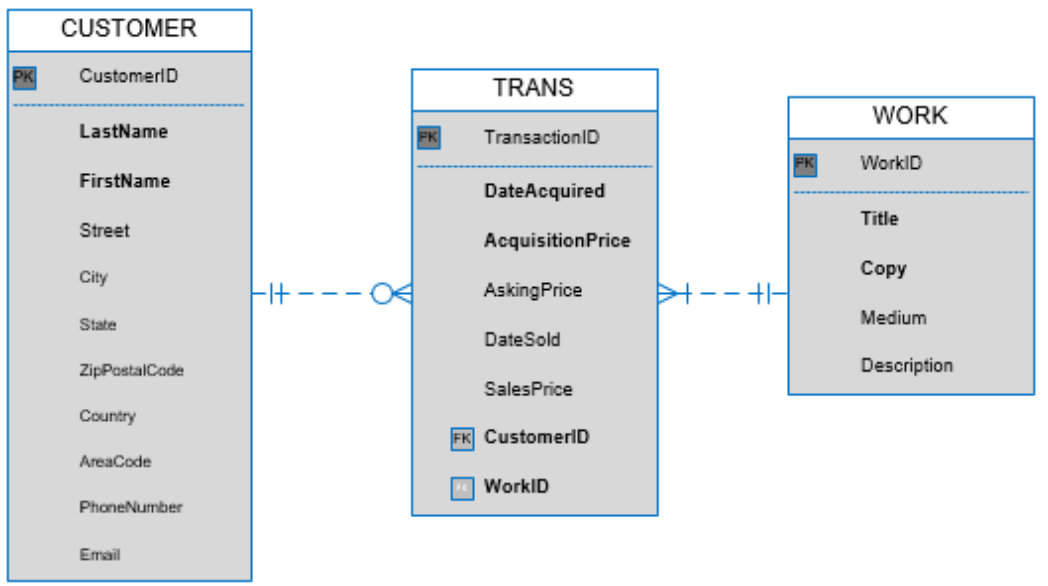


Non-Identifying relationship: (Non-ID)

Strong entity: Existence does NOT depend on parent

TRANS entity is **not dependent** on WORK or CUSTOMER for its primary key.

Always look for whether - PK (parent) → FK (child)

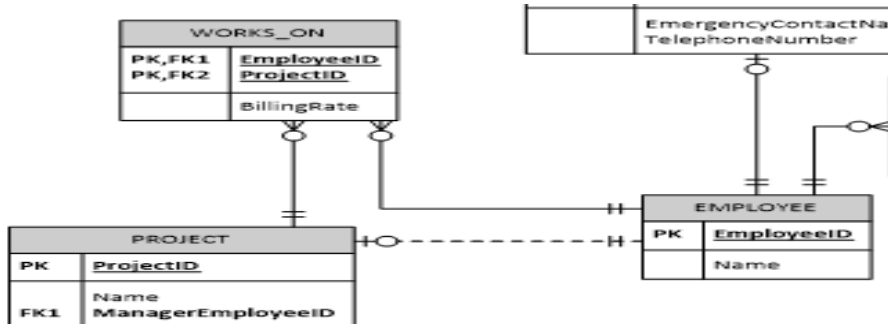


Identifying relationship: (ID)

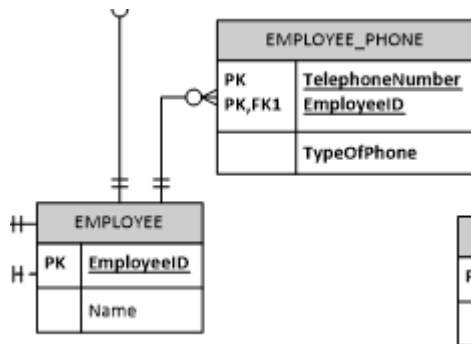
Weak entity: existence-dependent on the owner entity

Always look for whether- PK (parent) → PK (child)

WORKS_ON entity is **dependent** on PROJECT or EMPLOYEE for its primary key.



S



Split many to many to associative entity

Min/Max cardinality:

Pick a side. A relationship should have 2 maximum cardinality from each side and 2 minimum cardinality from *each side*

Min cardinality of 0 means *optional* relationship while 1 means *mandatory* relationship

EG: One instance of an employee can be related to zero, and many instances of an employee_phone

Thus maximum cardinality is: many

Other way around

Maximum cardinality is: one